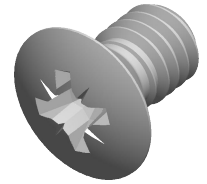


Specifications for: M2.5-0.45 X 4mm DIN 966 / ISO 7047, Metric, Machine Screws, Oval Pozidriv Alternative Drive, Full Thread, A2 Stainless Steel



Notes:

- Category: Machine Screws
- Head Style: Oval Countersunk Head
- System of Measurement: Metric
- Head Style Detail: 90 Degree Countersink
- Drive Style: Cruciform Recess Drive
- Drive Detail: Pozidriv Type Z
- Thread Length: Full Thread
- Thread Direction: Right-Hand Thread
- Material: Stainless Steel
- Material Grade: A2 Stainless Steel
- Coating: Uncoated
- Standards and Specifications: DIN 966 / ISO 7047

