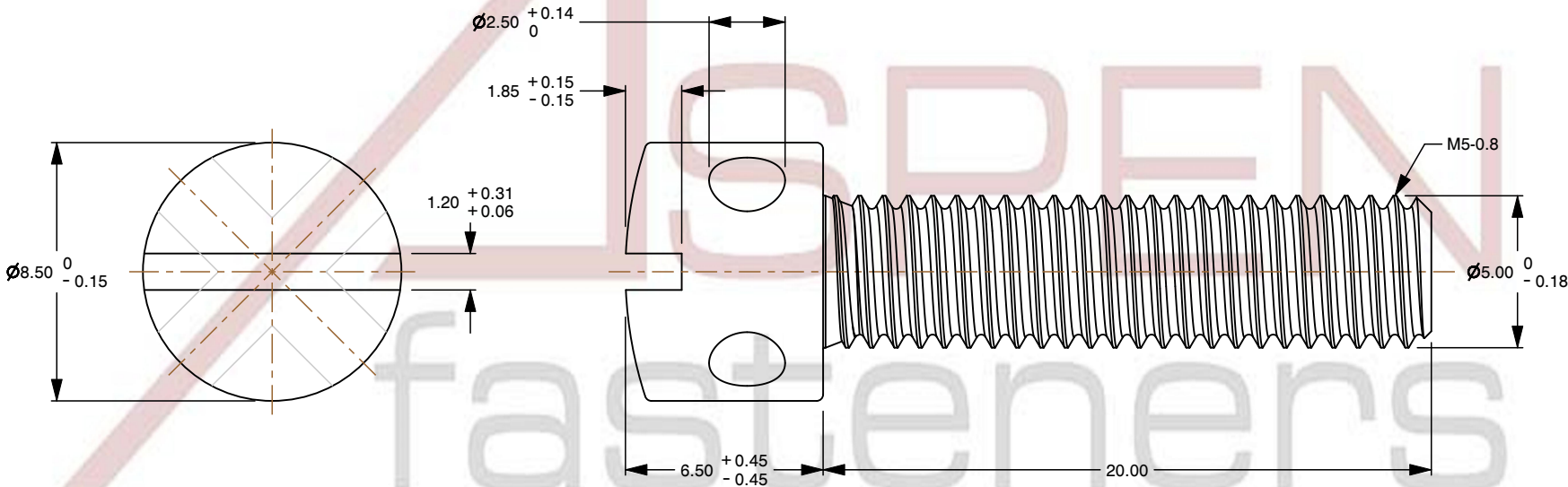
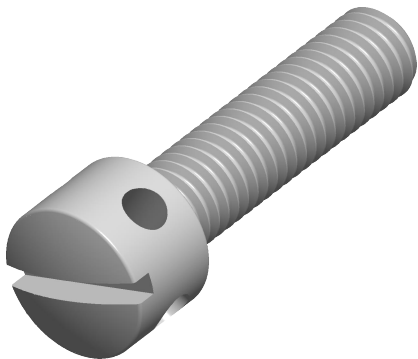



Specifications for: M5-0.8 X 20mm DIN 404, Metric, Capstan Screws, Slotted Drive, Steel, Zinc Plated

- Notes:
- Category: Capstan Screws
  - Head Style: Cylindrical Head
  - System of Measurement: Metric
  - Head Style Detail: Drilled Head
  - Drive Style: Slotted Drive
  - Thread Direction: Right-Hand Thread
  - Material: Steel
  - Material Grade: Class 5.8 Steel
  - Coating: Zinc Plated
  - Coating Color: Clear
  - Standards and Specifications: DIN 404



 www.aspenfasteners.com	This file and any associated information and specifications are provided for reference and evaluation purposes only and is subject to change without notice. Aspen Fasteners Inc. makes no representations, warranties, or guarantees as to the appropriateness, accuracy, completeness, or suitability for any purpose of the file, information or specifications. You are solely responsible for the use of the file, information, or specifications.	This document is the property of Aspen Fasteners Inc. and the information it contains may not be reproduced, disclosed, or shared with any third party without the expressed written permission of Aspen Fasteners Inc.	PRODUCT NAME M5-0.8 X 20mm DIN 404, Metric, Capstan Screws, Slotted Drive, Steel, Zinc Plated	UNIT MILLIMETERS
				ISSUED 2025-01-26
		SCALE 4.482	PART NUMBER: ME682-508X20	SHEET 1 of 1