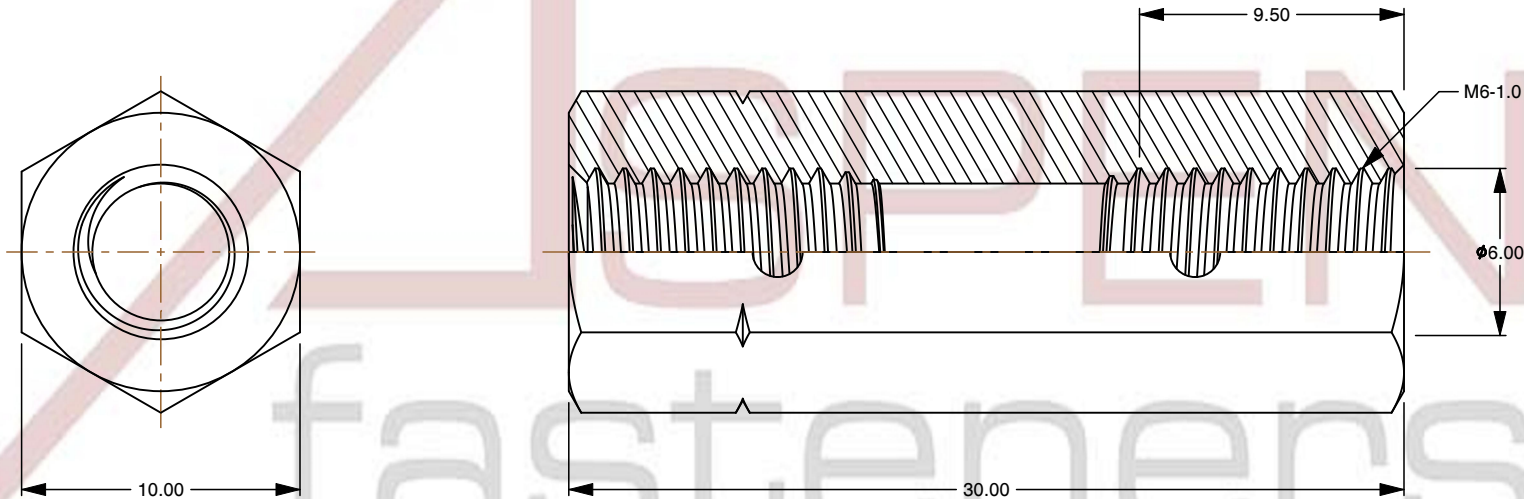
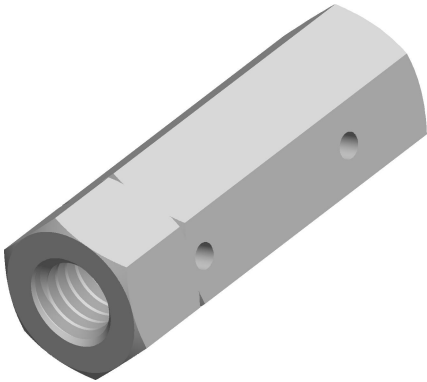



Specifications for: M6-1.0 X 30mm DIN 1479, Metric, Hex Coupling Nuts, Left and Right Hand Threading, Steel

Notes:

- Category: Coupling Nuts
- Form and Design: Double Chamfered and Double Countersunk
- System of Measurement: Metric
- Drive Style: External Hex Drive
- Thread Length: Part Thread
- Thread Direction: Left and Right-Hand Threading
- Material: Steel
- Material Grade: Class 5.8 Steel
- Coating: Uncoated
- Standards and Specifications: DIN 1479



 www.aspenfasteners.com	This file and any associated information and specifications are provided for reference and evaluation purposes only and is subject to change without notice. Aspen Fasteners Inc. makes no representations, warranties, or guarantees as to the appropriateness, accuracy, completeness, or suitability for any purpose of the file, information or specifications. You are solely responsible for the use of the file, information, or specifications.	This document is the property of Aspen Fasteners Inc. and the information it contains may not be reproduced, disclosed, or shared with any third party without the expressed written permission of Aspen Fasteners Inc.	PRODUCT NAME M6-1.0 X 30mm DIN 1479, Metric, Hex Coupling Nuts, Left and Right Hand Threading, Steel	UNIT MILLIMETERS
				ISSUED 2025-01-26
		SCALE 3.683	PART NUMBER: ME420-610	SHEET 1 of 1