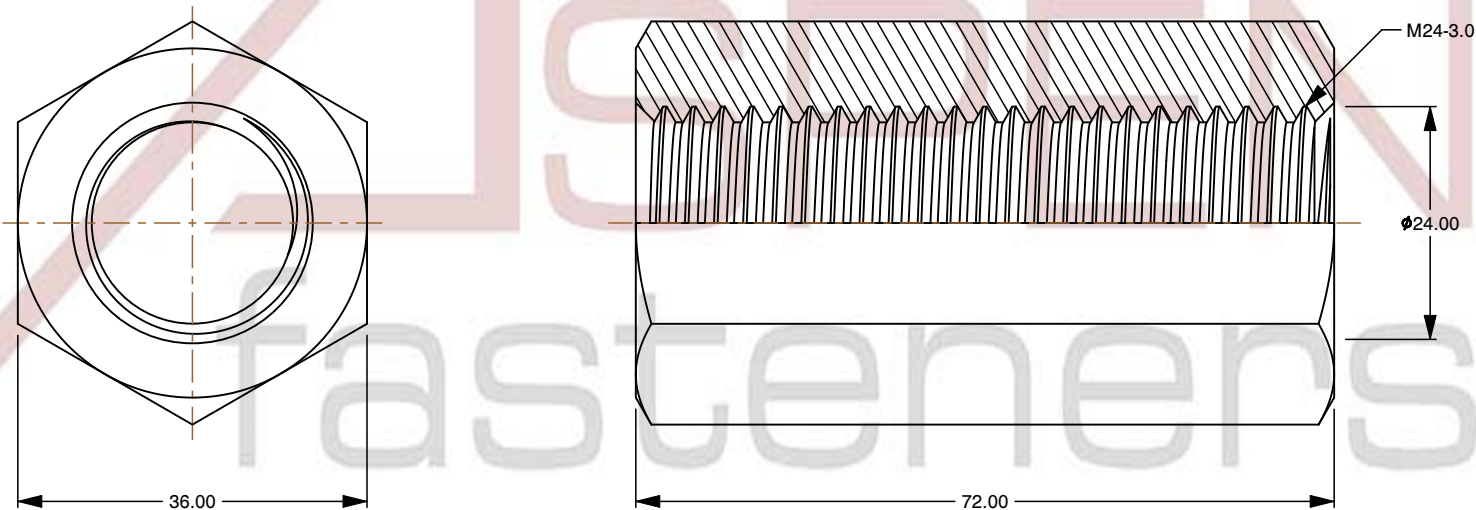
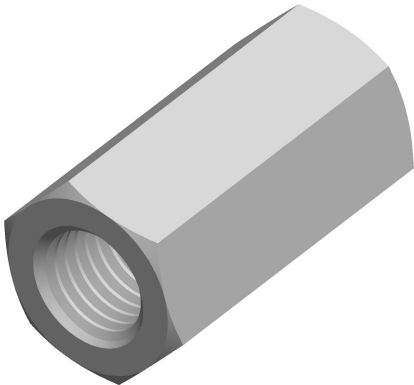



Specifications for: M24-3.0 X 72mm DIN 6334, Metric, Hex Coupling Nuts, Class 10.9 Steel, Zinc Plated

Notes:

- Category: Coupling Nuts
- Form and Design: Double Chamfered and Double Countersunk
- System of Measurement: Metric
- Drive Style: External Hex Drive
- Thread Length: Full Thread
- Thread Direction: Right-Hand Thread
- Material: Steel
- Material Grade: Class 10.9 Steel
- Coating: Zinc Plated
- Coating Color: Clear
- Standards and Specifications: DIN 6334



 www.aspenfasteners.com	This file and any associated information and specifications are provided for reference and evaluation purposes only and is subject to change without notice. Aspen Fasteners Inc. makes no representations, warranties, or guarantees as to the appropriateness, accuracy, completeness, or suitability for any purpose of the file, information or specifications. You are solely responsible for the use of the file, information, or specifications.	This document is the property of Aspen Fasteners Inc. and the information it contains may not be reproduced, disclosed, or shared with any third party without the expressed written permission of Aspen Fasteners Inc.	PRODUCT NAME M24-3.0 X 72mm DIN 6334, Metric, Hex Coupling Nuts, Class 10.9 Steel, Zinc Plated	UNIT MILLIMETERS
				ISSUED 2025-01-26
		SCALE 1.283	PART NUMBER: ME697-2430X72	SHEET 1 of 1