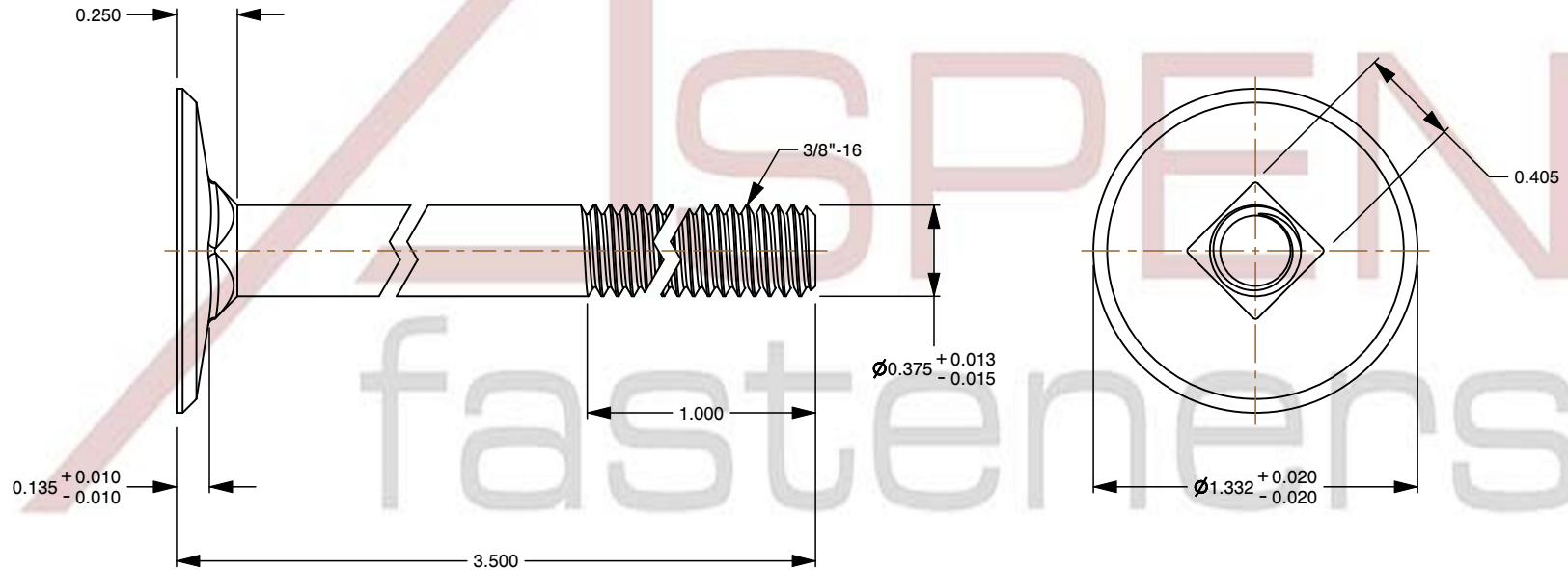
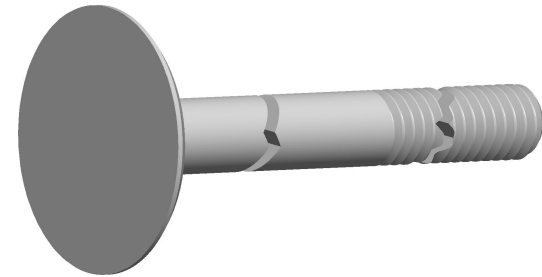


Specifications for: 3/8"-16 X 3-1/2" Elevator Bolts, Flat Head, Square Neck, Steel, Plain

Notes:

- Category: Elevator Bolts
- Head Style: Flat Head
- System of Measurement: Inch
- Head Style Detail: Square Neck
- Thread Length: Standard Thread Length
- Thread Direction: Right-Hand Thread
- Material: Steel
- Material Grade: Low Carbon Steel
- Coating: Uncoated
- Standards and Specifications: ASME B18.5



This file and any associated information and specifications are provided for reference and evaluation purposes only and is subject to change without notice. Aspen Fasteners Inc. makes no representations, warranties, or guarantees as to the appropriateness, accuracy, completeness, or suitability for any purpose of the file, information or specifications. You are solely responsible for the use of the file, information, or specifications.

This document is the property of Aspen Fasteners Inc. and the information it contains may not be reproduced, disclosed, or shared with any third party without the expressed written permission of Aspen Fasteners Inc.

SCALE 1.314

PRODUCT NAME
3/8"-16 X 3-1/2" Elevator Bolts, Flat Head,
Square Neck, Steel, Plain

PART NUMBER: BO061-3816X312

UNIT
INCHES

ISSUED
2025-02-20

SHEET 1 of 1