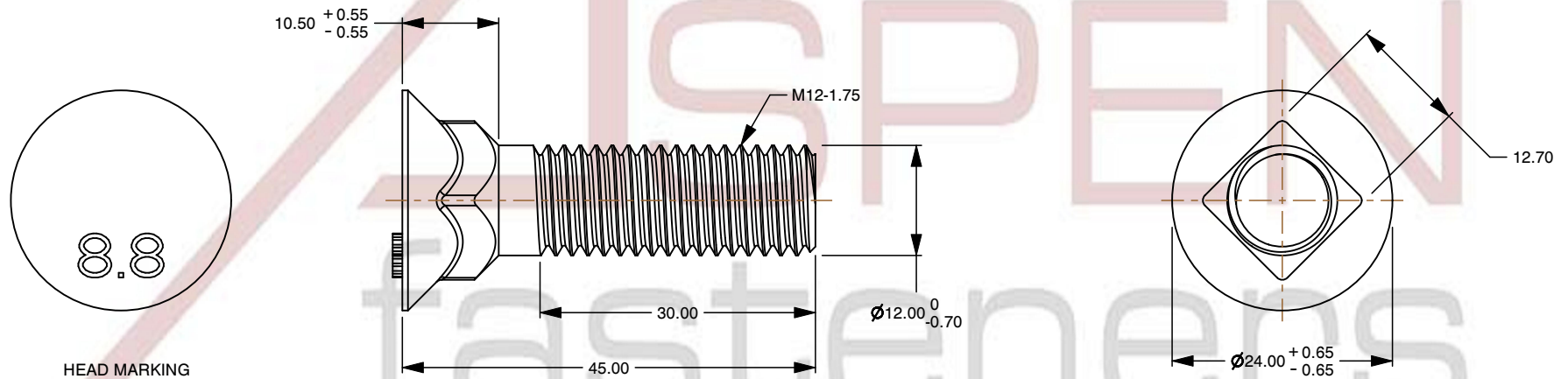
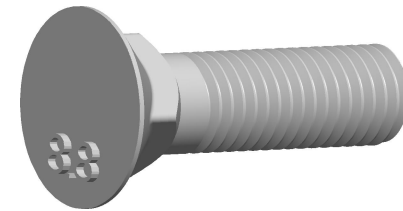



**Specifications for: M12-1.75 X 45mm DIN 608, Metric, Carriage Bolts, Flat Head, Short Square Neck, Class 8.8 Steel**

Notes:

- Category: Carriage Bolts
- Head Style: Flat Head
- System of Measurement: Metric
- Head Style Detail: Short Square Neck
- Head Markings: Material Grade Mark "8.8"
- Thread Length: Standard Thread Length
- Thread Direction: Right-Hand Thread
- Material: Steel
- Material Grade: Class 8.8 Steel
- Coating: Uncoated
- Standards and Specifications: DIN 608



|   |   |   |  |  |
|---|---|---|--|--|
| <br>www.aspenfasteners.com | This file and any associated information and specifications are provided for reference and evaluation purposes only and is subject to change without notice. Aspen Fasteners Inc. makes no representations, warranties, or guarantees as to the appropriateness, accuracy, completeness, or suitability for any purpose of the file, information or specifications. You are solely responsible for the use of the file, information, or specifications. | This document is the property of Aspen Fasteners Inc. and the information it contains may not be reproduced, disclosed, or shared with any third party without the expressed written permission of Aspen Fasteners Inc. | PRODUCT NAME<br>M12-1.75 X 45mm DIN 608, Metric,<br>Carriage Bolts, Flat Head, Short Square Neck,<br>Class 8.8 Steel | UNIT<br>MILLIMETERS                      |
|   |   |   | PART NUMBER: ME108-12175X45  | ISSUED<br>2025-02-20<br><br>SHEET 1 of 1 |