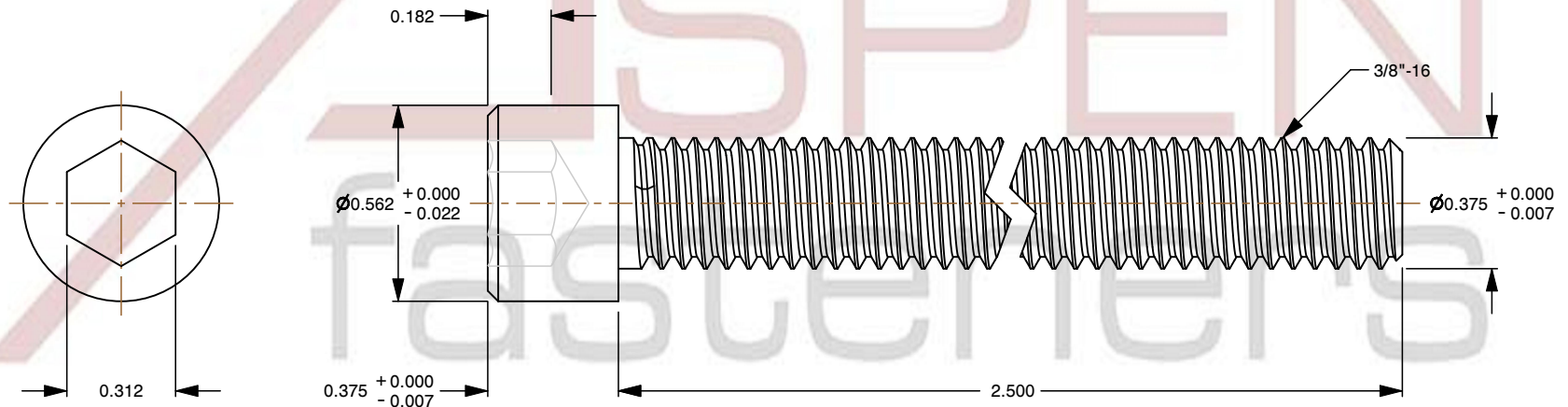
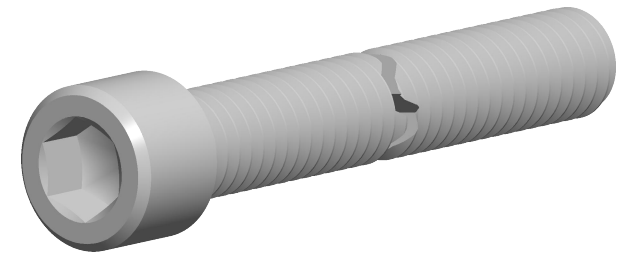



**Specifications for: 3/8"-16 X 2-1/2" Hex Socket Head Cap Screws, Full Thread,
UNC Coarse Thread, Alloy Steel, Black Oxide**

Notes:

- Category: Socket Head Cap Screws
- System of Measurement: Inch
- Form and Design: 1960 Series
- Head Style: Cylindrical Head
- Drive Style: Hex Socket Drive
- Pitch: UNC Coarse Thread
- Threading: Thread Class 3A
- Thread Length: Full Thread
- Thread Direction: Right-Hand Thread
- Material: Steel
- Material Grade: Alloy Steel
- Material Processes: Heat Treated
- Coating: Oxidized
- Coating Color: Black
- Hardness Rating: Rockwell C38-C43
- Origin: Origin Undefined
- Standards and Specifications: ASME/ANSI B18.3-2002 and ASTM A574



 www.aspenfasteners.com	This file and any associated information and specifications are provided for reference and evaluation purposes only and is subject to change without notice. Aspen Fasteners Inc. makes no representations, warranties, or guarantees as to the appropriateness, accuracy, completeness, or suitability for any purpose of the file, information or specifications. You are solely responsible for the use of the file, information, or specifications.	This document is the property of Aspen Fasteners Inc. and the information it contains may not be reproduced, disclosed, or shared with any third party without the expressed written permission of Aspen Fasteners Inc.	PRODUCT NAME 3/8"-16 X 2-1/2" Hex Socket Head Cap Screws, Full Thread, UNC Coarse Thread, Alloy Steel, Black Oxide	UNIT INCHES
			SCALE 1.945	PART NUMBER: SO084-3816X212X25X056
			SHEET 1 of 1	