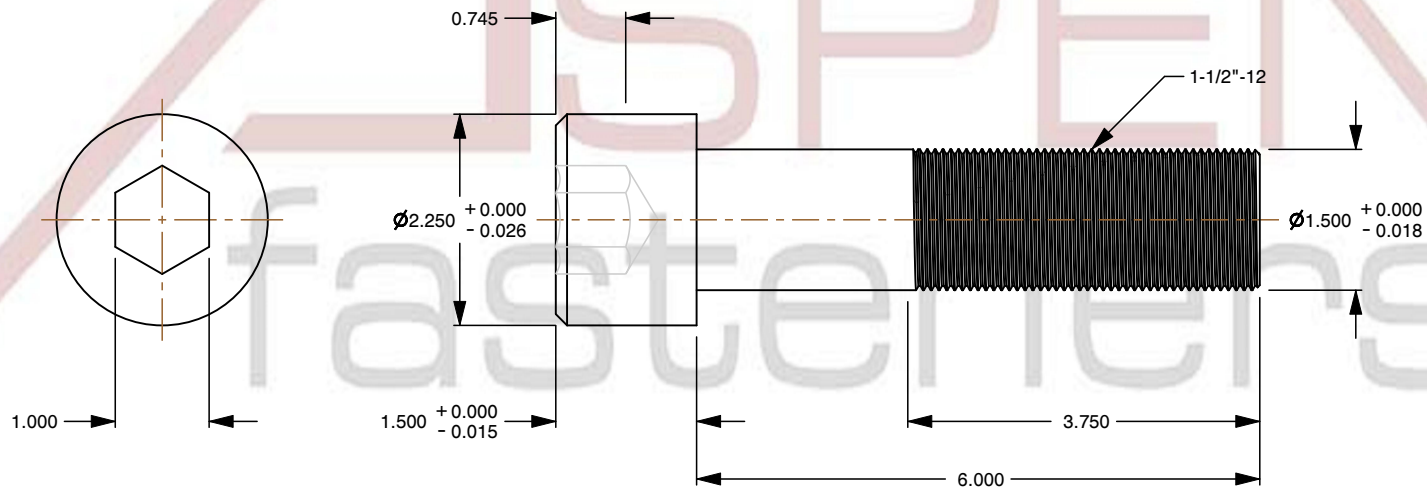
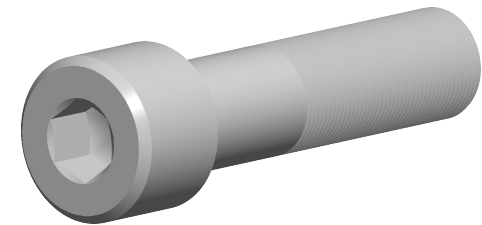


**Specifications for: 1-1/2"-12 X 6" Hex Socket Head Cap Screws, Part Thread, UNF Fine Thread, Alloy Steel, Black Oxide**

**Notes:**

- Category: Socket Head Cap Screws
- System of Measurement: Inch
- Form and Design: Semi-Standard
- Head Style: Cylindrical Head
- Drive Style: Hex Socket Drive
- Pitch: UNF Fine Thread
- Thread Length: Part Thread
- Thread Direction: Right-Hand Thread
- Material: Steel
- Material Grade: Alloy Steel
- Material Processes: Heat Treated
- Coating: Oxidized
- Coating Color: Black
- Origin: Origin Undefined
- Standards and Specifications: ASME/ANSI B18.3-2002 and ASTM A574



This file and any associated information and specifications are provided for reference and evaluation purposes only and is subject to change without notice. Aspen Fasteners Inc. makes no representations, warranties, or guarantees as to the appropriateness, accuracy, completeness, or suitability for any purpose of the file, information or specifications. You are solely responsible for the use of the file, information, or specifications.

This document is the property of Aspen Fasteners Inc. and the information it contains may not be reproduced, disclosed, or shared with any third party without the expressed written permission of Aspen Fasteners Inc.

**PRODUCT NAME**  
1-1/2"-12 X 6" Hex Socket  
Head Cap Screws, Part Thread,  
UNF Fine Thread, Alloy Steel,  
Black Oxide

**UNIT**  
INCHES

**ISSUED**  
2026-01-22

**SCALE** 0.489

**PART NUMBER:** SO088-11212X6X375X225

**SHEET** 1 of 1