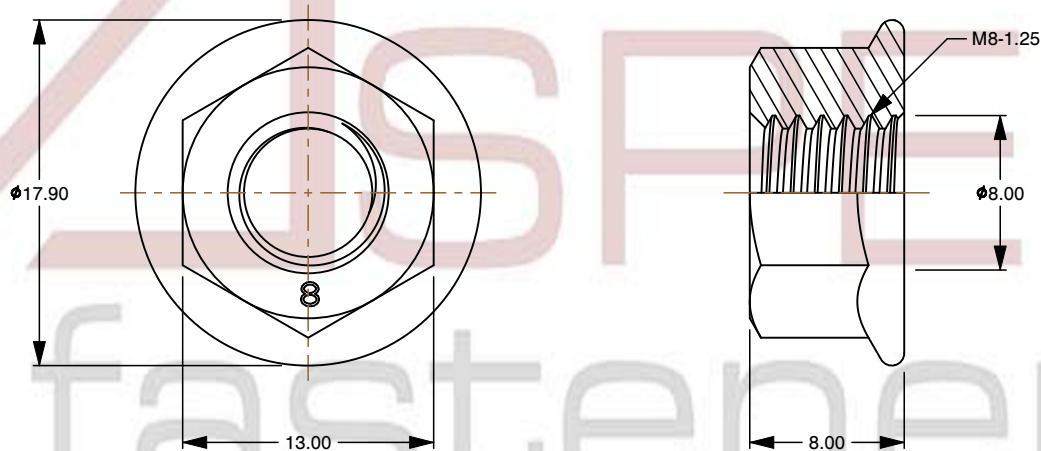
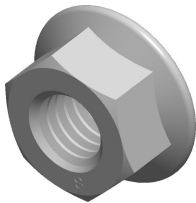



Specifications for: M8-1.25 DIN 6923, Metric, Hex Flange Nuts, Class 8 Steel, Zinc Plated

Notes:

- Category: Hex Flange Nuts
- Drive Style: External Hex Drive
- System of Measurement: Metric
- Thread Length: Full Thread
- Thread Direction: Right-Hand Thread
- Material: Steel
- Material Grade: Class 8 Steel
- Coating: Zinc Plated
- Coating Color: Clear
- Hardness Rating: Rockwell B91.5 - C30
- Standards and Specifications: DIN 6923



 www.aspenfasteners.com	This file and any associated information and specifications are provided for reference and evaluation purposes only and is subject to change without notice. Aspen Fasteners Inc. makes no representations, warranties, or guarantees as to the appropriateness, accuracy, completeness, or suitability for any purpose of the file, information or specifications. You are solely responsible for the use of the file, information, or specifications.	This document is the property of Aspen Fasteners Inc. and the information it contains may not be reproduced, disclosed, or shared with any third party without the expressed written permission of Aspen Fasteners Inc.	PRODUCT NAME M8-1.25 DIN 6923, Metric, Hex Flange Nuts, Class 8 Steel, Zinc Plated	UNIT MILLIMETERS
				ISSUED 2025-01-26
		SCALE 2.554	PART NUMBER: ME010-8125	SHEET 1 of 1