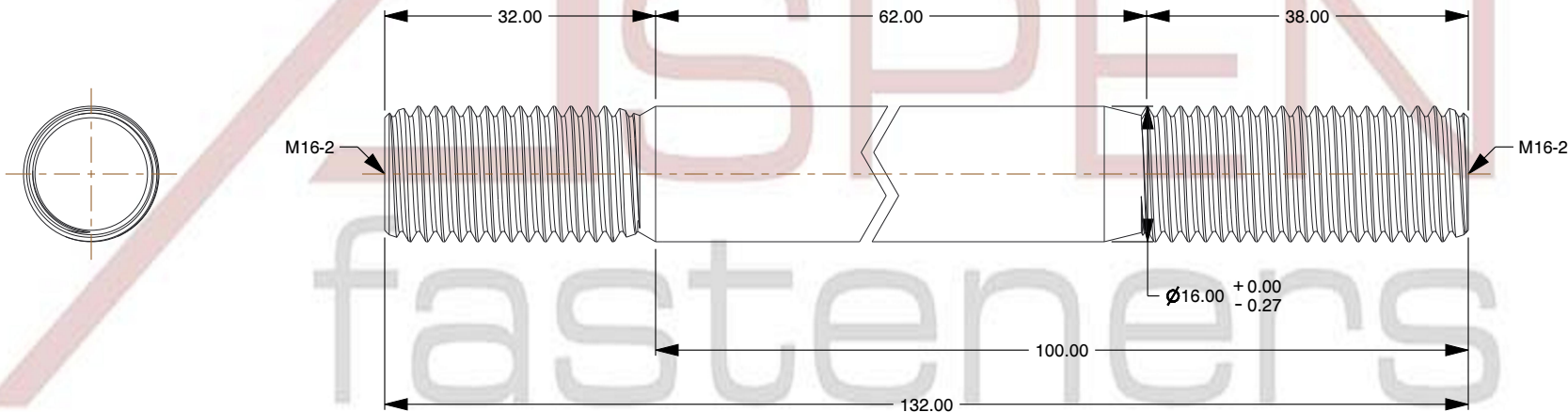
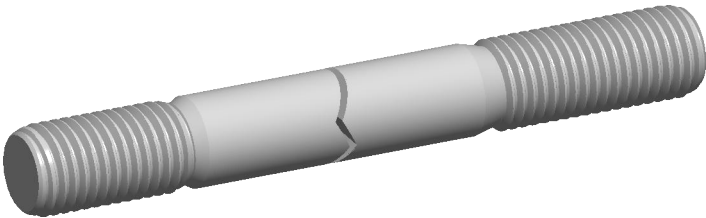



Specifications for: M16-2.0 X 100mm DIN 835, Metric, Studs,Double-Ended, Screw-in End 2.0 X Diameter, A4 Stainless Steel

- Notes:
- Category: Studs, Double-Ended
 - Form and Design: Screw-in End 2.0 X Diameter
 - System of Measurement: Metric
 - Thread Direction: Right-Hand Thread
 - Material: Stainless Steel
 - Material Grade: A4 Stainless Steel
 - Coating: Uncoated
 - Standards and Specifications: DIN 835



 www.aspenfasteners.com	This file and any associated information and specifications are provided for reference and evaluation purposes only and is subject to change without notice. Aspen Fasteners Inc. makes no representations, warranties, or guarantees as to the appropriateness, accuracy, completeness, or suitability for any purpose of the file, information or specifications. You are solely responsible for the use of the file, information, or specifications.	This document is the property of Aspen Fasteners Inc. and the information it contains may not be reproduced, disclosed, or shared with any third party without the expressed written permission of Aspen Fasteners Inc.	PRODUCT NAME M16-2.0 X 100mm DIN 835, Metric, Studs, Double-Ended, Screw-in End 2.0 X Diameter, A4 Stainless Steel	UNIT MILLIMETERS
				ISSUED 2025-01-26
		SCALE 0.047	PART NUMBER: ME713-1620X100	SHEET 1 of 1