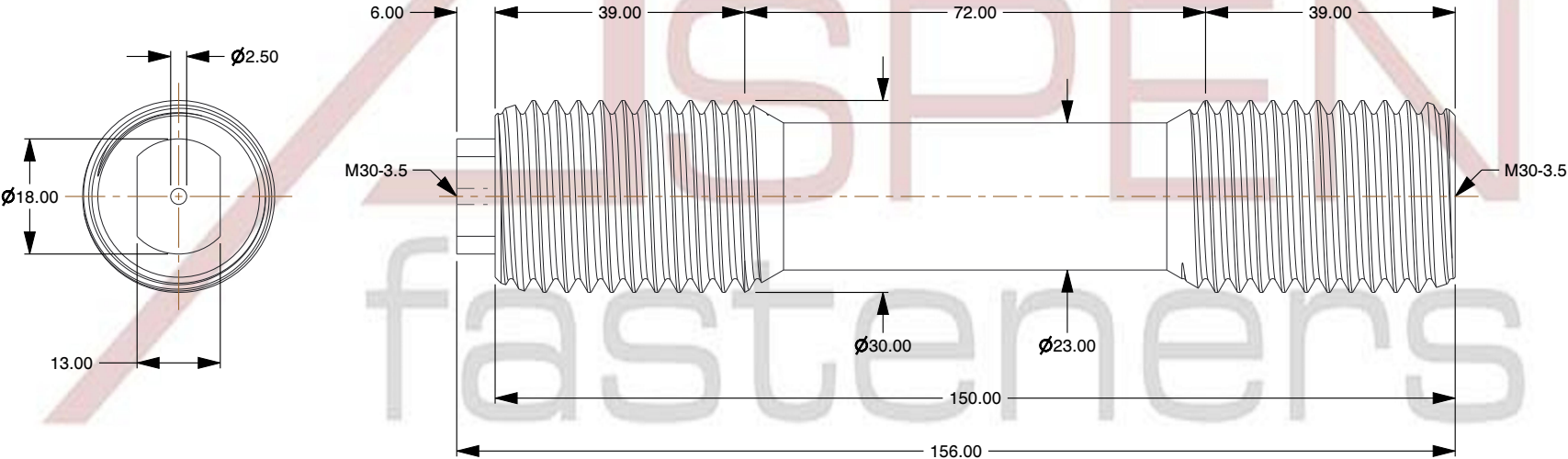
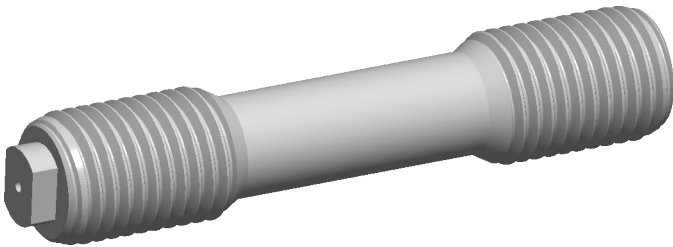



Specifications for: M30-3.5 X 150mm DIN 2510 Type L,Metric, Studs, Double-Ended, Waisted Shank,
1.7709 21CrMoV5-7 Steel

- Notes:
- Category: Studs, Double-Ended
 - Form and Design: Waisted Shank
 - System of Measurement: Metric
 - Thread Direction: Right-Hand Thread
 - Material: Steel
 - Material Grade: 1.7709 21CrMoV5-7 Steel
 - Material Processes: Hardened
 - Coating: Uncoated
 - Standards and Specifications: DIN 2510 Type L



 www.aspenfasteners.com	This file and any associated information and specifications are provided for reference and evaluation purposes only and is subject to change without notice. Aspen Fasteners Inc. makes no representations, warranties, or guarantees as to the appropriateness, accuracy, completeness, or suitability for any purpose of the file, information or specifications. You are solely responsible for the use of the file, information, or specifications.	This document is the property of Aspen Fasteners Inc. and the information it contains may not be reproduced, disclosed, or shared with any third party without the expressed written permission of Aspen Fasteners Inc.	PRODUCT NAME M30-3.5 X 150mm DIN 2510 Type L, Metric, Studs, Double-Ended, Waisted Shank, 1.7709 21CrMoV5-7 Steel	UNIT MILLIMETERS
				ISSUED 2025-01-26
		SCALE 0.036	PART NUMBER: ME714-3035X150	SHEET 1 of 1