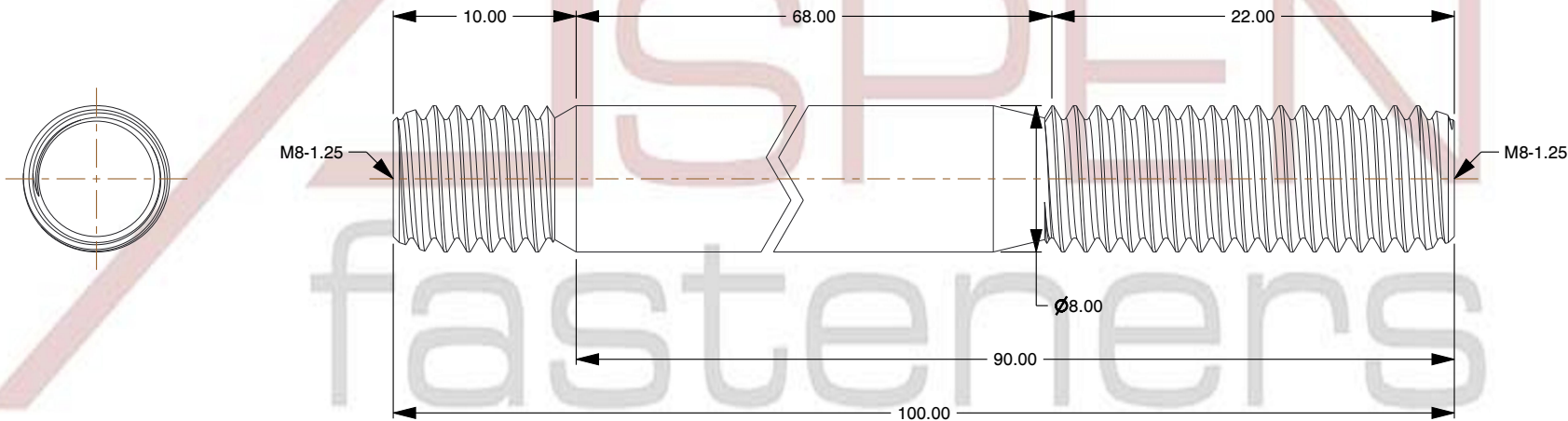
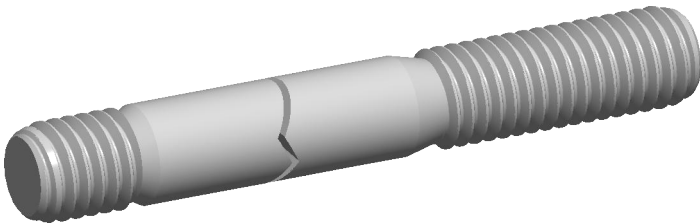



Specifications for: M8-1.25 X 90mm DIN 939, Metric, Studs,Double-Ended, Screw-in End 1.25 X Diameter, Class 8.8 Steel, Zinc Plated

Notes:

- Category: Studs, Double-Ended
- Form and Design: Screw-in End 1.25 X Diameter
- System of Measurement: Metric
- Thread Direction: Right-Hand Thread
- Material: Steel
- Material Grade: Class 8.8 Steel
- Coating Color: Clear
- Coating: Zinc Plated
- Standards and Specifications: DIN 939



 www.aspenfasteners.com	This file and any associated information and specifications are provided for reference and evaluation purposes only and is subject to change without notice. Aspen Fasteners Inc. makes no representations, warranties, or guarantees as to the appropriateness, accuracy, completeness, or suitability for any purpose of the file, information or specifications. You are solely responsible for the use of the file, information, or specifications.	This document is the property of Aspen Fasteners Inc. and the information it contains may not be reproduced, disclosed, or shared with any third party without the expressed written permission of Aspen Fasteners Inc.	PRODUCT NAME M8-1.25 X 90mm DIN 939, Metric, Studs, Double-Ended, Screw-in End 1.25 X Diameter, Class 8.8 Steel, Zinc Plated	UNIT MILLIMETERS
				ISSUED 2025-01-26
		SCALE 0.102	PART NUMBER: ME726-8125X90	SHEET 1 of 1