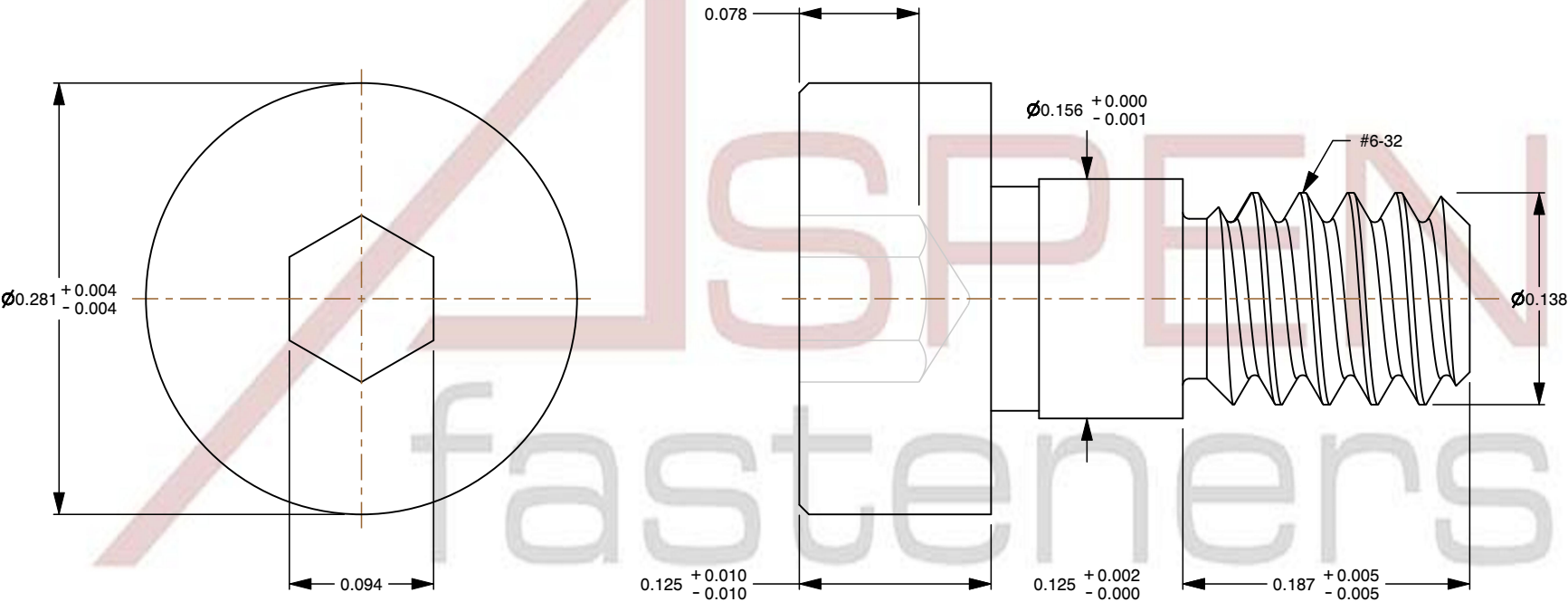
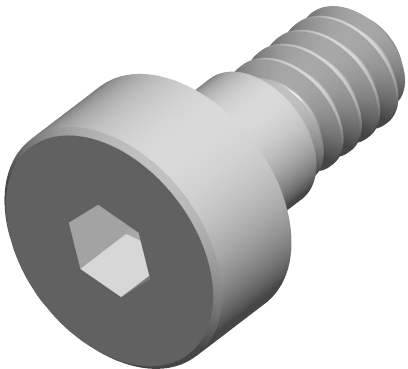



Specifications for: #6-32 X 1/8" Shoulder Screws, Hex Socket Drive, Stainless Steel, Made in U.S.A.

Notes:

- Category: Shoulder Screws
- Head Style: Cylindrical Head
- System of Measurement: Inch
- Drive Style: Hex Socket Drive
- Thread Direction: Right-Hand Thread
- Material: Stainless Steel
- Material Grade: ASTM A581
- Coating: Uncoated
- Origin: Made in U.S.A.



 www.aspenfasteners.com	This file and any associated information and specifications are provided for reference and evaluation purposes only and is subject to change without notice. Aspen Fasteners Inc. makes no representations, warranties, or guarantees as to the appropriateness, accuracy, completeness, or suitability for any purpose of the file, information or specifications. You are solely responsible for the use of the file, information, or specifications.	This document is the property of Aspen Fasteners Inc. and the information it contains may not be reproduced, disclosed, or shared with any third party without the expressed written permission of Aspen Fasteners Inc.	PRODUCT NAME #6-32 X 1/8" Shoulder Screws, Hex Socket Drive, Stainless Steel, Made in U.S.A.	UNIT INCHES
				ISSUED 2025-01-26
			SCALE 8.831	PART NUMBER: FC032-632X18