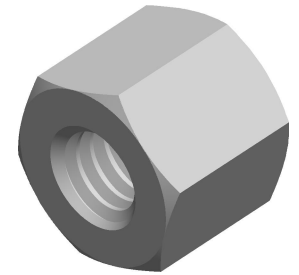


**Specifications for: M2.5-0.45 X 4mm Hex Female Standoffs, Metric, 4.5mm Across Flats, Aluminum, Made in U.S.A.**



Notes:

- Category: Hex Female Standoffs
- Form and Design: 4.5mm Across Flats
- System of Measurement: Metric
- Head Style: Headless
- Drive Style: External Hex Drive
- Thread Direction: Right-Hand Thread
- Material: Aluminum
- Material Grade: Standard Commercial Grade
- Coating: Uncoated
- Origin: Made in U.S.A.

