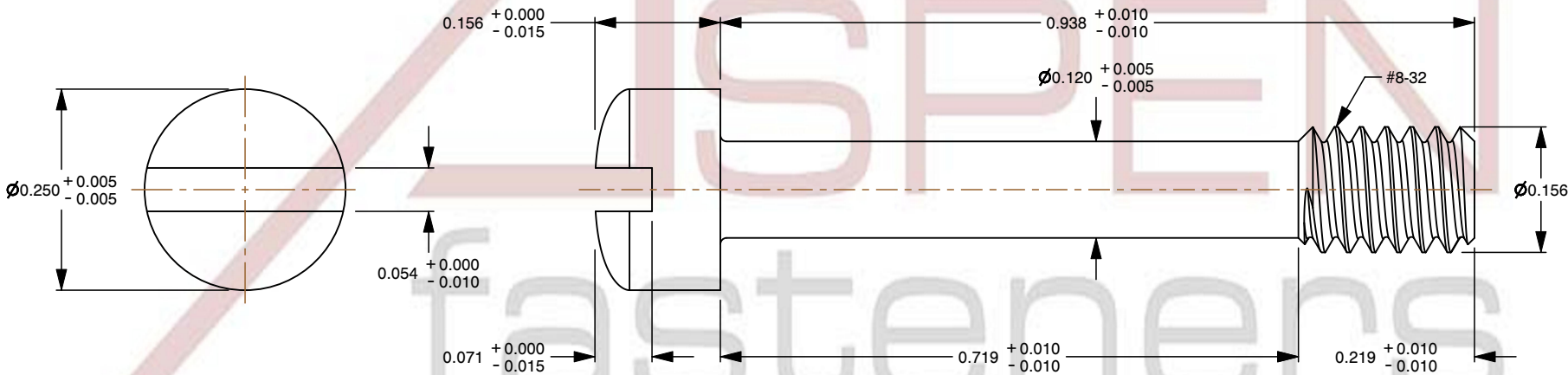
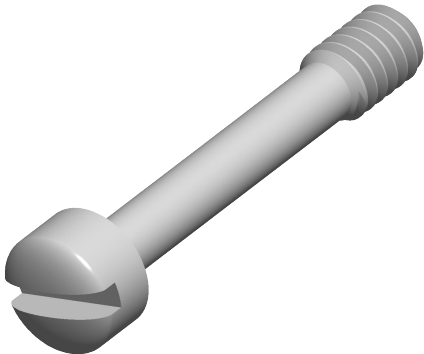



**Specifications for: #8-32 X 15/16" Captive Panel Screws, Style 4, Fillister Head, Slotted Drive, Stainless Steel, Made in U.S.A.**

**Notes:**

- Category: Captive Panel Screws
- Brand: Aspen Fasteners
- System of Measurement: Inch
- Form and Design: Style 4
- Head Style: Fillister Head
- Drive Style: Slotted Drive
- Thread Direction: Right-Hand Thread
- Material: Stainless Steel
- Material Grade: Standard Commercial Grade
- Coating: Uncoated
- Origin: Made in U.S.A.



 www.aspenfasteners.com	This file and any associated information and specifications are provided for reference and evaluation purposes only and is subject to change without notice. Aspen Fasteners Inc. makes no representations, warranties, or guarantees as to the appropriateness, accuracy, completeness, or suitability for any purpose of the file, information or specifications. You are solely responsible for the use of the file, information, or specifications.	This document is the property of Aspen Fasteners Inc. and the information it contains may not be reproduced, disclosed, or shared with any third party without the expressed written permission of Aspen Fasteners Inc.	PRODUCT NAME #8-32 X 15/16" Captive Panel Screws, Style 4, Fillister Head, Slotted Drive, Stainless Steel, Made in U.S.A.	UNIT INCHES
				ISSUED 2025-05-28
		SCALE 4.836	PART NUMBER: FC044-832X1516X14	SHEET 1 of 1